



BT43 MALE FLOATING MOUNT MINI BALUN FOR E1-E2

ELECTRICAL:

- Exceeds ITU G.703 requirements .
- Impedance matching : 75 ohms to 120 ohms .
- Data transmitted rates : 2-8Mbps for E1-E2 .
- Return Loss : -29db for 2Mbps , -21db for 8Mbps .
- Insertion Loss : -0.2db for 2Mbps , -0.3db for 8Mbps .
- Both directional conversion .
- No AC power or batteries needed .
- Operating Temperature : 0-70°C .

MATERIALS :

NO	DESCRIPTION	MATERIAL	Q'TY	FINISH
1	CONNECTOR BODY	BRASS	1	GOLD(2u''~3u'')
2	INSULATOR	TEFLON(400°C)	1	
3	CENTER CONTACT	PHOSPHOR BRONZE	1	GOLD(2u''~3u'')
4	U RING	PBT+15%G.F(UL94V-0)	1	
5	CENTER HOLDER	TEFLON(400°C)	1	
6	BODY	BRASS	1	NICKEL(100u''~150u'')
7	WASHER	PBT+15%G.F(UL94V-0)	1	
8	BALUN CORE	FERRITE	1	1 : 1.26
9	IDC SET	PBT+30%G.F(UL94V-0)	1	
10	SECURITY NUT	BRASS	1	NICKEL(80u''~100u'')
11	CABLE FIX COVER	PBT+30%G.F(UL94V-0)	1	
12	WASHER	FE	1	NICKEL(80u''~100u'')
13	CABLE HOLDER	BRASS	1	NICKEL(80u''~100u'')

Table 1

SCHEMATIC DIAGRAM :

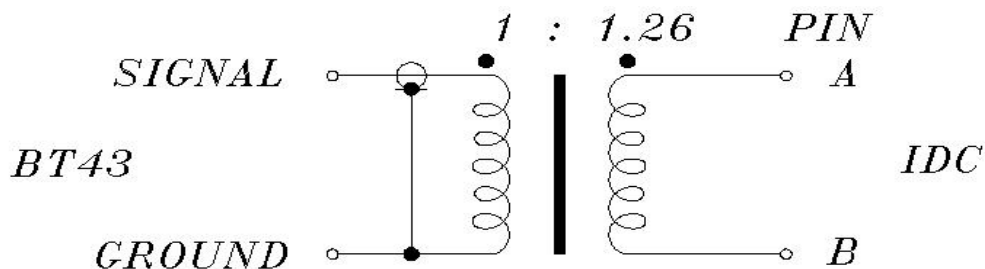
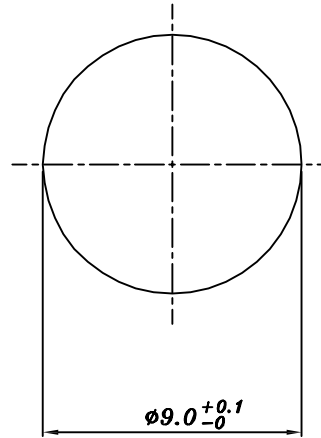
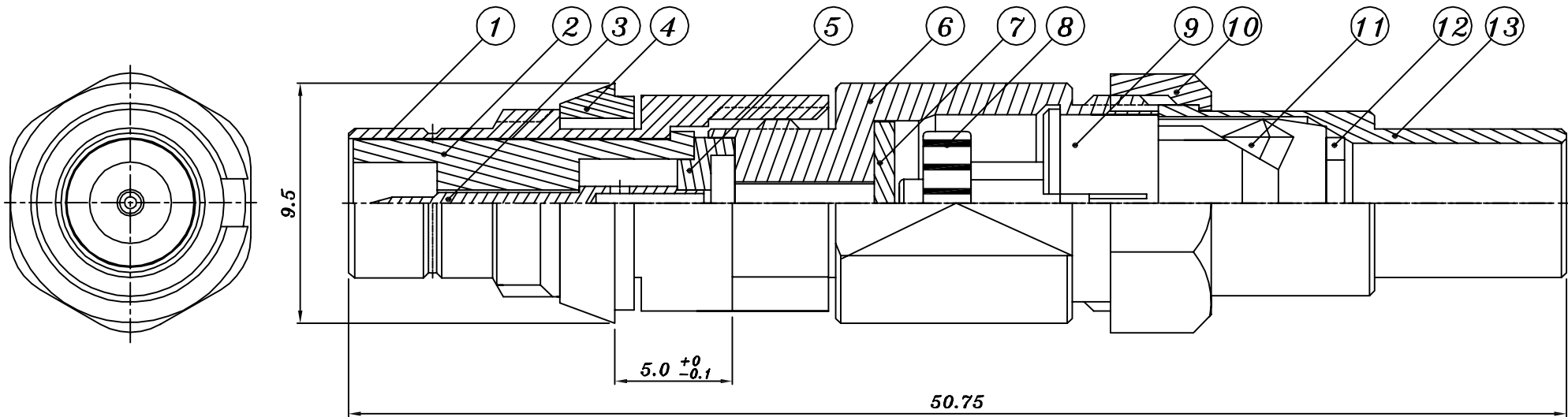
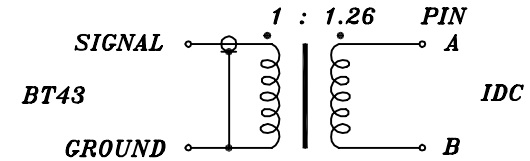


Figure 1



PANEL MOUNTING HOLE

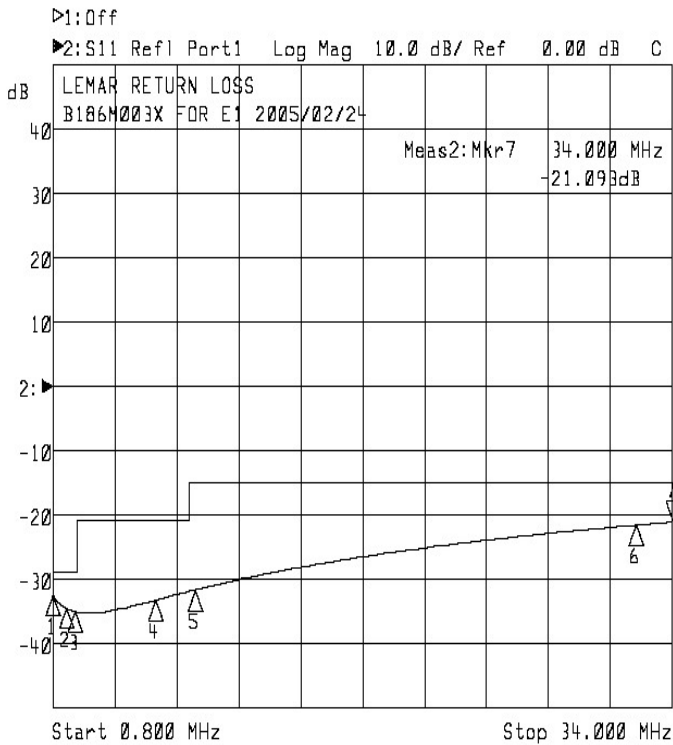


- *Data Rates to 2.048 Mbps
- *75 Ohm Coax to 120 Ohm Twisted Pair
- *Bi-Directional Signal Conversion
- *No AC Power or Batteries Needed
- *Female Coax BT43 Connectors Available
- *Ultra-Miniature Enclosure

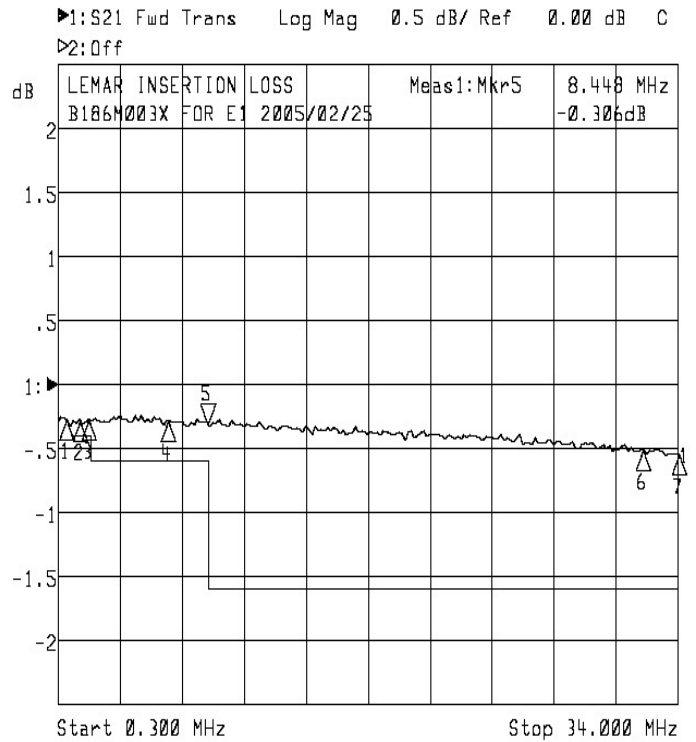
13	CABLE HOLDER	BRASS	1	NICKEL(80u"-100u")
12	WASHER	FE	1	NICKEL(80u"-100u")
11	CABLE FIX COVER	PBT+30%G.F(UL94V-0)	1	
10	SECURITY NUT	BRASS	1	NICKEL(80u"-100u")
9	IDC SET	PBT+30%G.F(UL94V-0)	1	
8	BALUN CORE	FERRITE	1	1 : 1.26
7	WASHER	PBT+15%G.F(UL94V-0)	1	
6	BODY	BRASS	1	NICKEL(100u"-150u")
5	CENTER HOLDER	TEFLON(400)	1	
4	U RING	PBT+15%G.F(UL94V-0)	1	
3	CENTER CONTACT	PHOSOPHOR BRONZE	1	GOLD(2u"-3u")
2	INSULATOR	TEFLON(400)	1	
1	CONNECTOR BODY	BRASS	1	GOLD(2u"-3u")
NO	DESCRIPTION	MATERIAL	Q'TY	FINISH

UNLESS OTHERWISE SPECIFIED DIMENSIONS ARE IN INCHES mm TOLERANCE ARE: FRACTIONS DECIMALS ANGLES X ±0.1 XX ±0.05		CONTRACT NO.		LEMAR ENTERPRISES CO.LTD	
MATERIAL		APPROVALS	DATE		
FINISH		DRAWN CHUNG	03/11 '05	BT43 MALE FLOATING MOUNT MINI BALUN FOR E1 (75 Ω: 120 Ω)	
DO NOT SCALE DWG.		CHECKED		SIZE A4	FSC# NO.
		ISSUED		DWG NO. B186M003X	REV.
				SCALE 4 : 1	SHEET 1 OF 1

Test reports



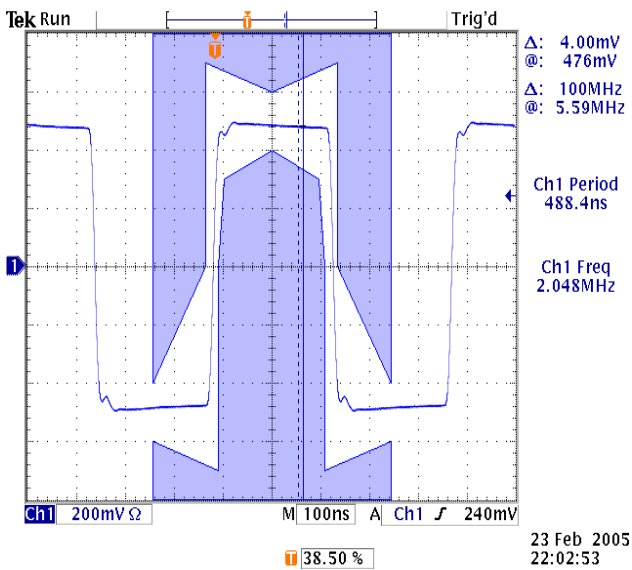
1: Mkr (MHz)	dB	2: Mkr (MHz)	dB
1:	0.8000	-32.396	
2:	1.5440	-34.602	
3:	2.0480	-35.082	
4:	6.3120	-33.265	
5:	8.4480	-31.633	
6:	32.0640	-21.607	
7:	34.0000	-21.093	



1: Mkr (MHz)	dB	2: Mkr (MHz)	dB
1:	0.8000	-0.273	
2:	1.5440	-0.286	
3:	2.0480	-0.274	
4:	6.3120	-0.282	
5:	8.4480	-0.306	
6:	32.0640	-0.510	
7:	34.0000	-0.547	

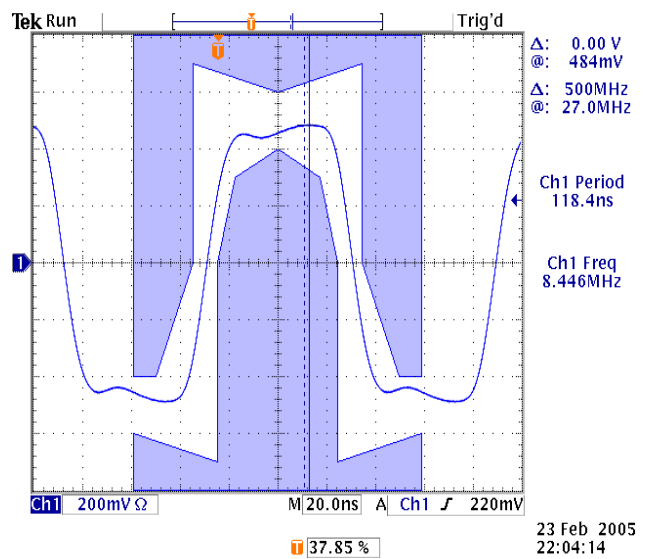
Figure 2

Figure 3



G.703 spec mask(2.048Mbps)

Figure 4



G.703 spec mask(8.448Mbps)

Figure 5